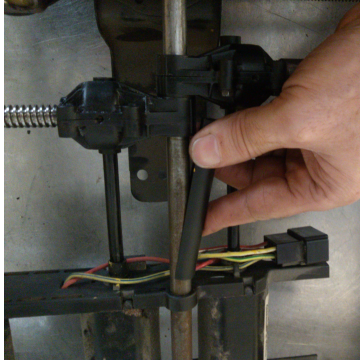


Two Men One Garage

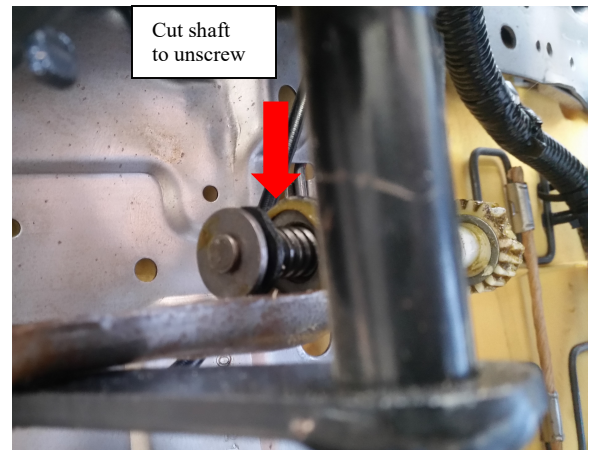
www.2men1garage.net

07-14 GM Geared Shaft Replacement Instructions.

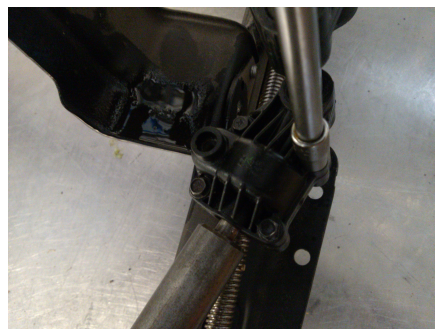
1. Remove the split plastic sleeve spacers so the casings can slide side to side.



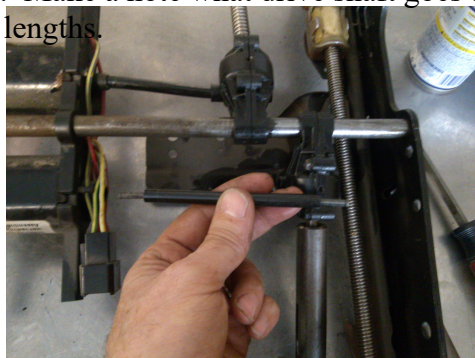
2. Cut the shaft with the bad gear, so you can unscrew it from the lift lever.



3. Take out the four 1/4 head screws from the motor casing to remove the bad gear and shaft.



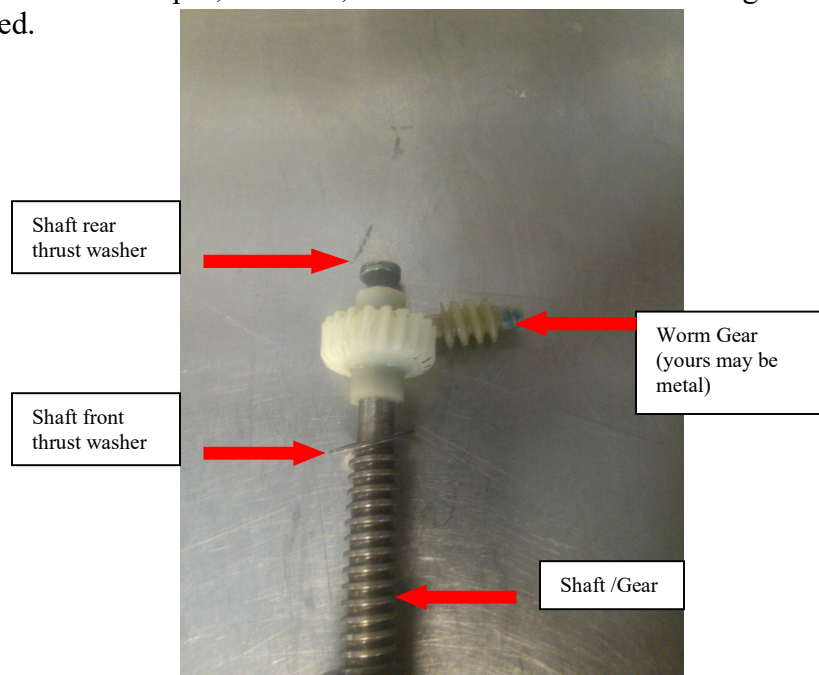
4. Sliding the cases will disengage the flexible drive shafts between the motor and the gears. Make a note what drive shaft goes to what motor and gear. They are different lengths.



5. After removing the 4 screws from the casing
With the bad gears, use a small screw driver to separate the two case halves.



6. Once the cases are split, the shaft, shaft thrust washer and worm gear can be removed.



7. Screw the shaft into the lift lever and install the plastic washer, metal washer and squeeze ring. Make sure to squeeze the ends of the ring to ensure proper seating of the ring into the groove.

8. If you have a factory metal worm gear, reuse it instead of the nylon one I provide. Reinstall the shaft, front thrust washer, rear thrust washer, and worm gear into the casing. Make sure all the old grease and broken gear parts are removed. Use white lithium grease for reassembly. The old worm gear has identical square ends. That's so a flexible drive shaft can be inserted in either side of the case for assembly interchangeability. The replacement worm gear has only one square end. The other end has a small ball bearing inserted into the end. The ball is not needed for this type of case, but just leave it in the end. It will not harm or interfere with anything. Just make sure the square open end is inserted towards the motor, so the flexible drive shaft can be inserted into it later during the assembly process.



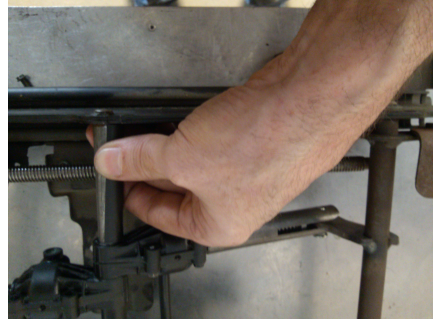
9. Below is a picture of how the assembled parts look like. Placing the seat track on its side makes reassembly easier. Slide the other side of the case towards the assembled part and reinstall the four $\frac{1}{4}$ head screws.



10. Reinstall the flexible drive shaft into the motor and slide the gear casing assembly back onto the other end of the shaft. Ensure the square end of the shaft engages the square hole in the plastic worm gear.



11. Once all flexible drive shafts have been reinstalled and all gear cases are positioned correctly, snap the plastic sleeve spacers back onto the shaft.



12. Contact me with any questions. C: 912 667 4198